

Gail has Acquired Brain Injury, and lives with her young son. She has struggled to provide a stable home for him and a member of SUPPORTED LIVES staff has assisted her to develop a normal family routine at home, and to help Gail get involved in social activities within her local community.

STAFFING

All staff undergo a rigorous recruitment and selection process. This includes:

- an enhanced CRB check (including Police checks).
- Interview by panel
- 3 references checked
- All new staff need to complete a probation period of 6 months

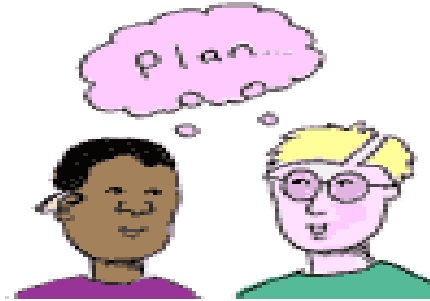
A stated aim of **SUPPORTED LIVES** is to maintain high standards for our staff.



We provide good terms and conditions of employment, including: permanent contracts; regular training opportunities (including LDAF and NVQ) and close supervision and support (monthly), to ensure that our services remain of the highest quality.

There is a senior member of staff on call at all times.

CLIENT INVOLVEMENT



We involve each client in choosing the things that they want to do.

We take care to match the right

member of staff to the client, as it is important that clients (and their carers) like and trust the person who supports them.

Our aim is to enable people to take part in activities which would normally be closed to them, because of their high support needs.



Seamus is a man who is on the autistic spectrum and requires assistance first thing in the morning, occasionally in the evening, and support to activities on week days. He has 3 named support workers, as he does not like it if people he doesn't know come to support him. He is often supported to go on public transport to enjoy museums and events in places such as Manchester and Leeds.

SUPPORTED LIVES



"We respect the unique value of each individual"

SUPPORTED LIVES provides high quality support to enable adults with learning disabilities and other vulnerable people to live as independently as possible in their own homes and local communities.

SUPPORTED LIVES are committed to:

- Supporting people to greater independence and control over their own lives
- Treating people in a respectful way at all times
- Including clients in the planning of their services
- Offering a service that promotes choice and involvement in the community.

QUALITY ASSURANCE

We regularly check with carers and other purchasers to ensure that we continue to offer the level of support and service that each client expects of us.

We have a designated worker who has responsibility for undertaking quality assurance sampling with carers, clients and other agencies.



SUPPORTED LIVES has an Advisory Committee of carers, clients, and independent professionals who monitor the outcomes of the organisation and advise and influence future direction.

SUPPORTED LIVES

Company Registration Number:

5101897

Registered address:

Rebecca House
Rebecca Street
BRADFORD
BD1 2 RX

NOT FOR PROFIT

SUPPORTED LIVES is a not-for-profit social enterprise organisation. We are not registered as a charity but we do have 'charitable aims'.

These state that we "provide services that challenge social exclusion of people with disabilities ...to enable them to exercise their rights to dignity and independence and realise their full potential in the setting of their local community."



CARE STANDARDS

SUPPORTED LIVES has successfully achieved the registration requirements of the Commission for Social Care Inspection. [Reg. J520002178]

The organisation is also approved as an accredited Agency with Bradford Council Compliance Unit.

Saida is a young woman with multiple physical and learning disabilities as well as health issues. Staff support her at home for 4½ hours per day, both mornings and evenings, providing personal care and support. This also enables her mother to spend time with her other siblings and for all of them to enjoy time together as a family.

Michael is a young man who is on the Autistic Spectrum. He attends a day centre but finds it very difficult to settle there. We provide two staff to support him, five days a week, on activities such as walking, swimming as well as assisting him to settle in the day centre. Michael has developed a good relationship with the staff that supports him.

CHARGES

All our charges are usually met either by The Independent Living Fund, (where eligible) or by Social Services/Health/Primary Care Trusts, for example, through DIRECT PAYMENTS. We have set rates for our services, although these may be individually altered depending on the nature of support and assistance that is required.

For a detailed list of our charges contact the office.

WANT MORE INFORMATION?

SUPPORTED LIVES

Rebecca House
Rebecca Street
BRADFORD
BD1 2 RX

Tel: 01274 377 104

Email: office@supportedlives.co.uk

Website: www.supportedlives.co.uk